

DeltaCad is a computer aided design (CAD) software package used by a number of diallists to create sundials. It is relatively easy to learn and reasonably priced at \$39.95 USD. Even before you buy it, you can download a trial version that is good for 45 days. To obtain the trial version or to order DeltaCad go to the following site: <http://www.deltacad.com> Then go to the appropriate page.

If you are serious about learning to use DeltaCad then be sure to also get the manual. This manual is very useful and will help you a great deal when you are learning to use the software. Be sure to print it out. You will find the manual at: <http://www.deltacad.com/manual.pdf>

When you download the software it will come in the form of a “setup.exe” file. Executing the file will bring up the screen shown in Figure 1. Be sure to carefully read and follow all the instructions and the installation will complete in very little time. It’s just that easy!



Figure 1: DeltaCad Setup Screen

Once DeltaCad is installed it is ready to use. My operating system is Windows 98 and the following instructions use the labels associated with it. Newer operating systems will be similar enough that you should be able to follow these instructions.

When DeltaCad is installed an icon is not placed on the Desktop. You can start DeltaCad by selecting “Start”, then “Programs” and finally “DeltaCad”. It is very easy to place a shortcut on the Desktop. This procedure is shown in Figure 2. First select “Start” and then “Programs”. Find “DeltaCad” and **right click** on it. A new list of commands will appear as shown in the figure. Now select “Send To” and finally “Desktop (Create shortcut)”. The DeltaCad logo shown on this last list will be placed on the Desktop. You can then move it wherever you like and select the shortcut to start the software.

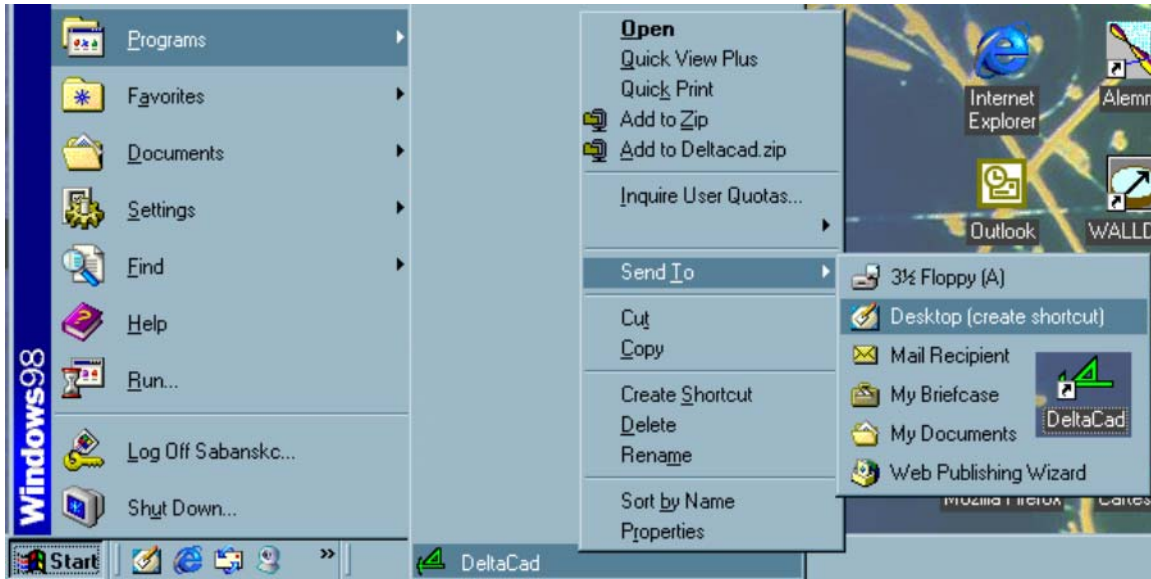


Figure 2: DeltaCad Shortcut

When you select the DeltaCad icon the software will startup and initialize to the default drawing. This is shown in Figure 3. At this point you can start drawing and it is a good time to pull out the manual and begin with the working example they provide.

This introduction is intended to help you get DeltaCad up and running, which is not a difficult task. It is not intended to teach you how to use the software. The one thing that will do that is to practice. You do not need to start with a sundial. You will find that DeltaCad is useful for many other tasks. If you have never used CAD software before start out with something simple.

Okay, there is one thing I will show you but it's something personal and may not matter to you. When DeltaCad starts up all the line weights set to “Normal”. I prefer “Thin” and if you follow the procedure in Figure 4 the line weights for “Line”, “Circle”, “Shapes” and “Spline” can be set so they are “Thin” every time DeltaCad is started. Select “Options”, then “Options” again and finally the item of interest. A small window will open where you can change the line weight to “Thin”. You must repeat this process for each of the listed items but it only has to be done once. You can still select a heavier line weight during the drawing process.

The Sundial Primer Getting Started with DeltaCad

created by
Carl Sabanski

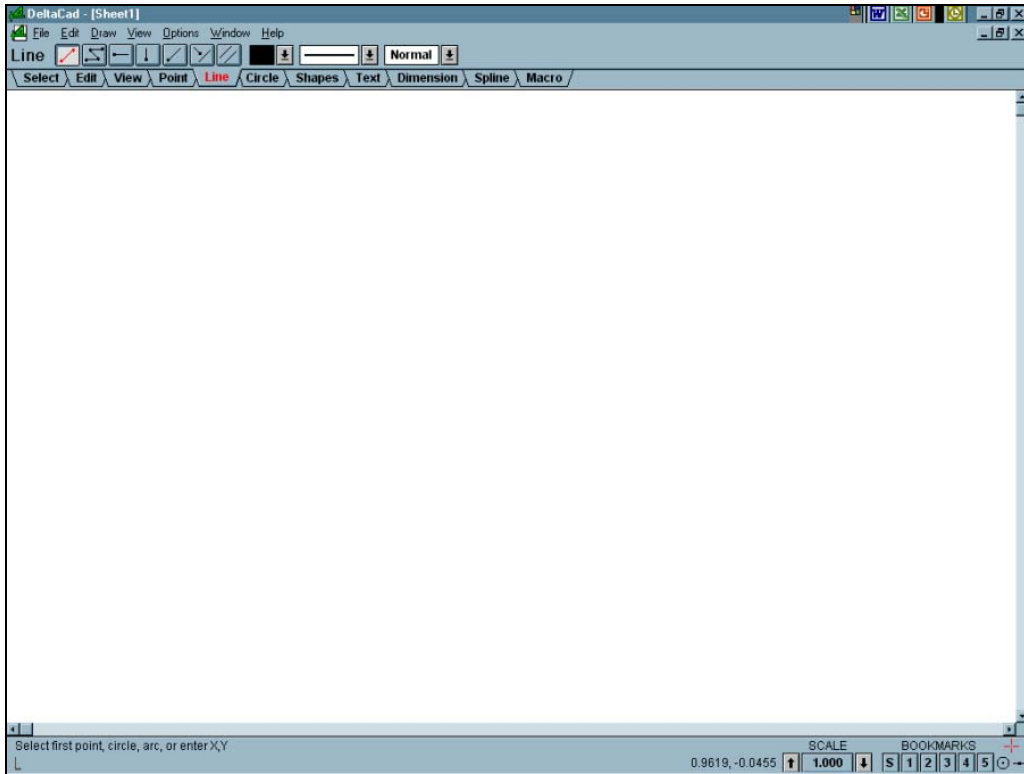


Figure 3: DeltaCad Startup Page

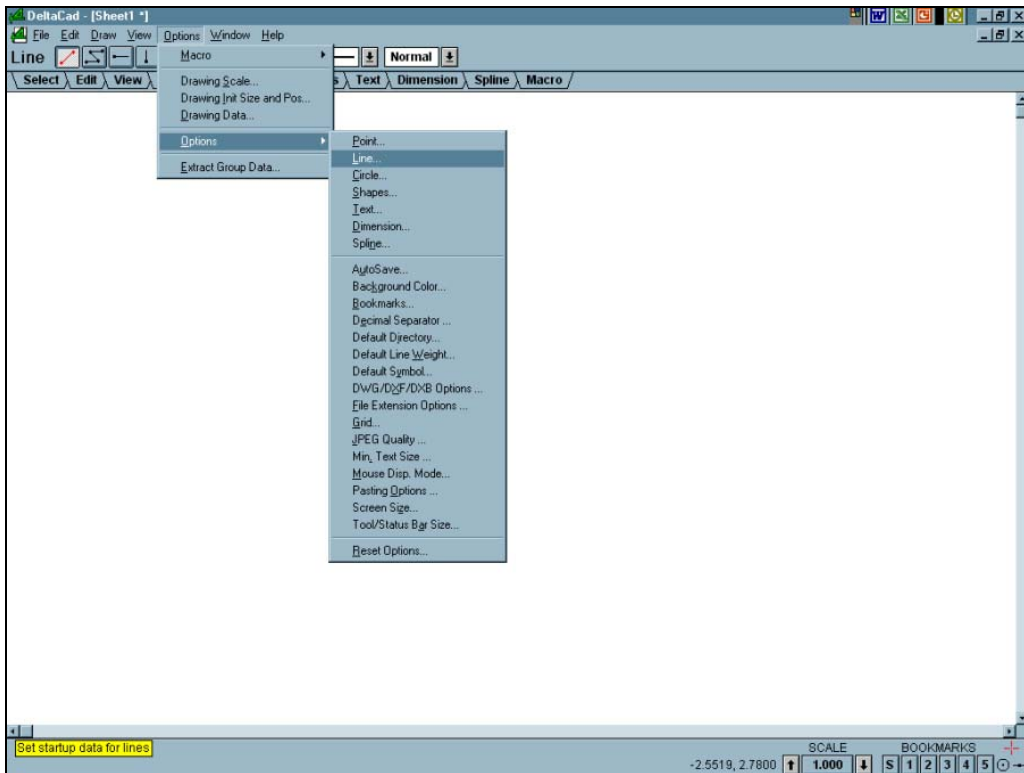


Figure 4: DeltaCad Line Weight

If you decide that you are not interested in DeltaCad or that you do not want to pay for the software after the 45-day trial period you will want to get rid of the software as it will not function. There is no obvious uninstall routine provided but it is there. Just follow Figure 5. **Right click** on your “My Computer” icon, located on the Desktop, and select “Explore”. Select in sequence “Drive_c (C)”, “Program Files” and “DeltaCad”. In the DeltaCad directory run “Uninstal.exe” and the software will be removed. This does not remove the shortcut that you placed on the Desktop. **Right click** on the shortcut icon and select “Delete”. Say “GOODBYE”!

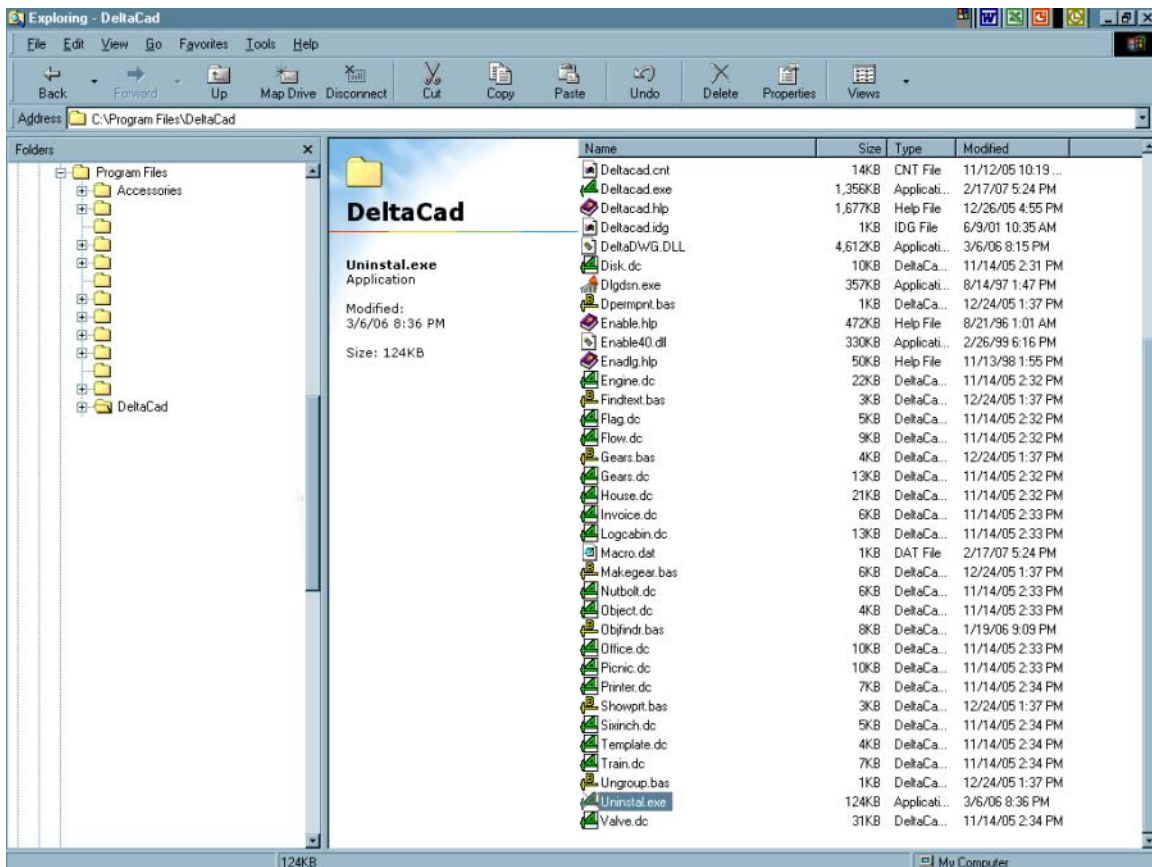


Figure 5: DeltaCad Uninstall